

ASB Theatre
Marlborough

Technical Specifications

McLauchlan Family Auditorium



Updated: October 2023

Stage

Stage Floor

The stage is flat and has no rake.

Black painted hardboard on top of plywood rated to 750kg per square metre.

Proscenium

Stage Floor to bottom of Pelmet in its standard position: 7.20 m

Stage Floor to Permanent structure: 8.50 m

Width: Min: 11.05 m

Max(standard): 13.85 m

Stage Measurements

Front of thrust stage to setting line: 3.00 m

Height of stage from auditorium (thrust at seating height): 0.86 m

Front of permanent stage to setting line (Back of Proscenium): 1.17 m

Setting Line to front of rear wall columns: 12.36 m

Stage width between fly floors: 16.97 m

Stage floor to underside of bottom gallery: 8.20 m

Stage centre to Pan Bar: 8.30 m

Stage floor to underside of Grid: 18.25 m

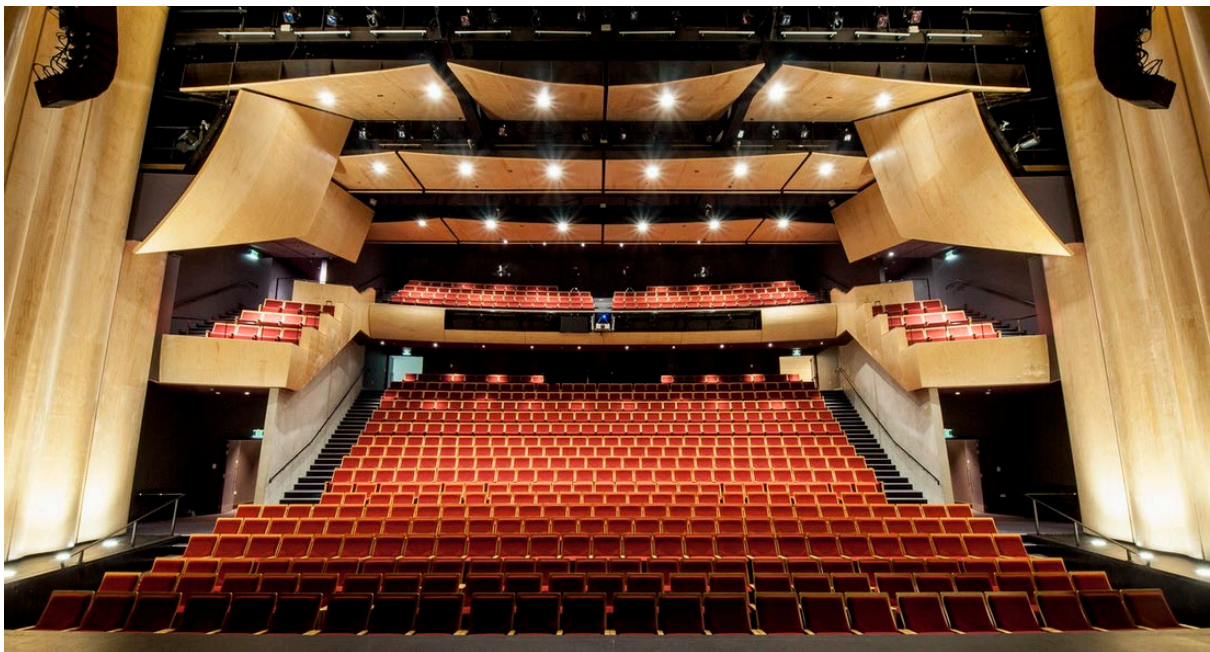
Please Note: Screws may be used to attach set where needed however any holes must be filled before leaving.



Auditorium

The Auditorium consists of raked seating through the stalls, a raked dress circle and balcony areas on both sides.

Total Seating Capacity	701
Stalls	437
Dress Circle	153
Thrust	75
Balcony Left	24
Balcony Right	24
Accessible	28
House Seats	8



Orchestra Pit Lift / Thrust Stage

The orchestra pit lift can be used as either an Orchestra Pit (3m below stage height), 3 rows of auditorium seating (AA, BB, CC) or as a thrust extension for the main stage.

The lift is a hydraulic scissor lift capable of lifting a static load of 10T.

Mechanical interlocks are put in place when used at auditorium height and thrust stage height.

The orchestra pit extends a further 3m under the stage when the lift is in its lowest position.

Flying & Rigging

Full Counterweight Flying system comprising of 65 line sets including 2 Pan Bars.

Batten Length	15.60 m
Batten in dead:	1.30 m
Batten out dead:	18.19 m
No. of suspension wires per batten:	5
Max UDL on standard Battens:	500 KG
Max point load on standard Battens:	200 KG
Max UDL on Pan Bars:	300 KG

Advance Truss Position available between Proscenium and Bridge 1. Three motor positions are available on sliding dollies.

Grid Spreader beams (8 Available)	SWL per point 1,000 KG
	SWL per beam 1,000 KG
Maximum allowable loading on grid using spreader beams	12,000 KG

Any motors or other such equipment suspended from the grid must be hung from the spreader bars and not the grid structure.

Drapes

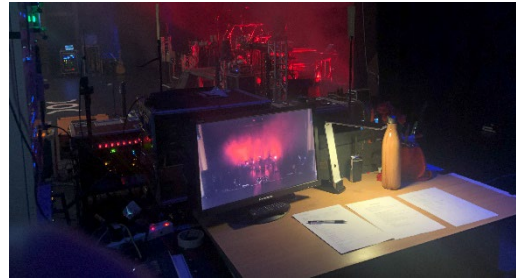
House Curtain	Malaga Purple	9m X 15.6m	
Pelmet Border	Malaga Purple	4m X 15.6m	
Legs x 5	Black	9m X 4.5m	
Tab x 3	Black	9m X 15m	Can open from centre or fly out
Sharks Tooth Gauze	Black	9m X 15m	
CYC: PVC Rigid	Black	9m X 15m	
CYC: Cloth	White	6.8m x 15m	

Please Note: All flown items must be rigged with rated equipment and be treated with fire retardant where appropriate. All flying items are subject to inspection and approval by a Venue Technician. Flown items need to feature in your Health and Safety documentation.

Backstage

Stage Managers Desk

The stage managers desk is located in the down stage prompt corner.



Coms System

Standard Comms Location:

Fly Rail

Lighting

Audio/Visual

Sound

Followspot 1

Followspot 2

Altair Intercom Base station is located at the stage managers desk.

All these positions are flexible, additional belt packs and headsets are available.

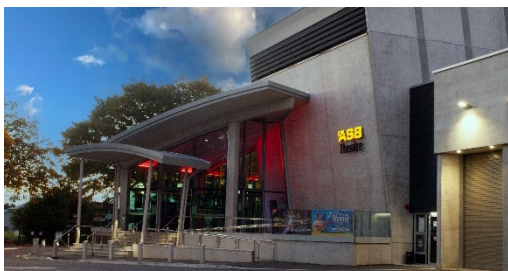
Wireless Coms are also available upon request.

Paging/ Show Relay

There is a paging system located at the Stage Managers desk which can page all of the relevant backstage areas. Each room has an individual volume control.

Stage Monitor

There are video relays located in the four corners of the stage house, stage managers desk, green room and dressing rooms. Camera is located on the circle rail.



Loading Dock

The truck dock door is 3.5m X 4.5m.

The loading dock landing is 1m above ground level.

The internal length between the landing and truck dock door is 11.3m.

The truck dock door must be able to be shut. If your truck cannot fit inside the dock with the door shut it

must be moved offsite once unloaded.

Wifi

Wifi is available free of charge throughout the building.

Smoke Isolation and Fire System

The ASB Theatre Marlborough operates a timer based isolation system.

The fire system must be in isolation mode and monitored by a staff member before any smoke or haze producing machines are turned on. **In the event of a fire brigade callout due to the use of atmospheric machines without the consent and confirmation from a staff member there will be a non-negotiable \$2000 +GST fire brigade callout fee.**

Access Equipment

Elevated Work Platform

Genie AWP-36S

Maximim height is 12.90 m

Single person lift

For use by Venue staff or a person holding a valid mobile EWP certificate under the supervision of a venue technician.

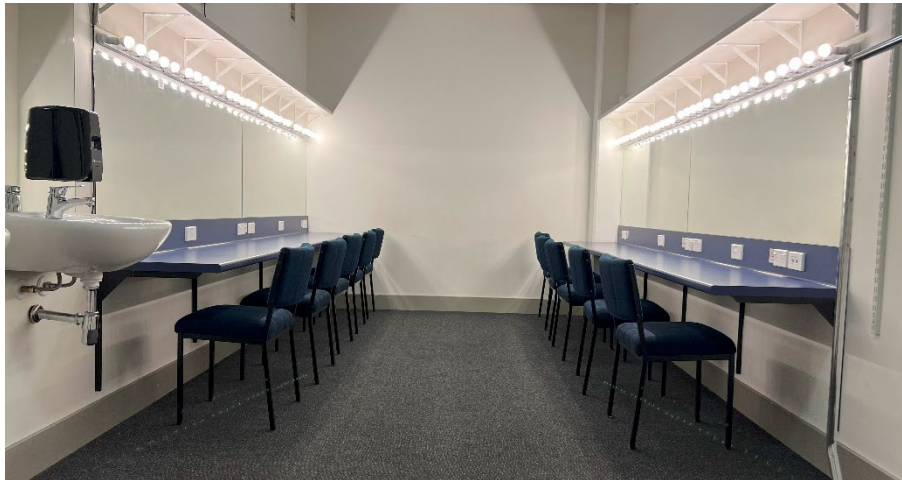
Ladders

9.7m Zarges Skymaster X

Dressing Rooms

We have 6 dressing rooms available on the basement level which all include access to the stage managers paging system, video and audio show relay feed. Two showers are available for general use.

	Capacity
VIP 1 (Including Ensuite)	2
VIP 2 (Including Ensuite)	2
Dressing Room 1	10
Dressing Room 2	5
Dressing Room 3	20
Dressing Room 4	20



Green Room

The Green Room has kitchenette facilities including a microwave, boiling water, fridge and sink.

Due to licencing, the Venue DOES NOT permit alcohol to be brought onto the site and consumed.

Due to the smoke detection system, there is to be to no burning incenses or candles, no cooking on hotplates or using toasters.

Laundry

The laundry has a 2 x 8.5kg Fisher & Paykel Washing Machines, 1 x 8kg Fisher & Paykel Drier, 1 x 8kg Electorlux Intuitive Drier, 1 x iron and ironing board.

Health & Safety

Fire Safety

All flexible fabrics used on scenery/props must be flame-retarded. If not they can be made flame-retarded by applying a chemical mixture such as Inspecta-Shield.

Proof should be provided for each piece of material over 1m² brought into the ASB Theatre Marlborough that it has been properly flame retarded in order to comply fully with the NZ building code C3.

Approved flame retarding materials and methods of application must be used.

Any costumes where there is a risk presented by the use of naked flame or pyrotechnics should be fire retarded.

Cut flowers, fresh cut decorative greens or natural trees and shrubs etc are allowed if kept in soil/water and maintained. Balsam, Hemlock or other materials containing pitch are prohibited.

Fresh cut decorative greens should not be hung on a combustible base or framework and should not be allowed to hang more for more than 24 hours.

Equipment and set being flown should be flown using steel rigging components or if synthetic slings are used a steel safety must also be used.

Hazardous Materials

Please inform us well in advance of your event if you will be performing any hazardous or notifiable work.

At minimum we will require that you provide us with a methodology statement for any hazardous activities and a proof of work safe notification (if required) at least 3 weeks out from the start of your event. Failure to produce this information may result in the hazardous activity not being allowed to proceed.

This includes (but is not limited to) pyrotechnics, fire and flame effects, performer flying, lifting of items over 500KG over a height of more than 5m, lasers, stage floor loading over 750kg per m², firearms, weapons, hazardous substances including Dry Ice, or anything that may have an impact on our building code of compliance (ie blocking exits or turning off Exit lighting)

Lighting

Lighting is operated from the rear centre of the stalls.

Scale lighting plans are available. Please contact us if you have not received one.

5 X Prewired Lighting Bars with 30 waylines.

3 X Front of house Lighting Bridges. Bridge 1 has 36 waylines, Bridge 2 and 3 have 24 waylines each.

1 X Circle Rail with 24 waylines.

2 X Front of house Perch Positions.

2 X Booms on rear side of pros between 2.5m and 8m from stage height.

House Lights/ Fade time etc

Control

Strand Neo

Strand Shownet via N21 Nodes or Ethernet

House lighting control via Strand Vision.net

Lighting Inventory

Additional inventory may incur an extra charge and must be booked in advance if required.

Please note – there is a limited supply of barndoors and iris's.

Lighting Fixtures	Standard rig QTY	Additional QTY
1200w Fresnel	22	4
1200w PC	10	0
1000w Pacific 12/28	0	12
1000w Pacific 14/35	6	0
800w SPX 18/34	30	1
1000w Diluvio CYC Lights	14	0
1000w MFL Par64	32	4
LED XP-300 Zoom	0	18
LED XP-700 Zoom	25	0
LED Spot330 CMY	0	14
LED RGBWAUV	0	18
SGM X5 LED Strobe	0	2
LED bar 200w	0	18

Atmospheric

ZR 35 Smoke Machine

0

2

Jem K1 Hazer

0

1

Followspots

1200w Selecon Performer Followspot

0

2

(Positioned at rear of circle. Please book these at the time of tickets going on sale as 12 seats become unavailable.)

Sound

Main Auditorium Sound System

d&b Audiotechnik T Series

Left – Right Hang configuration with 2x Tsubs and 7x T10i per side with 8s Coaxial Speakers for circle wing fills.

Extras available on request:

Front Fill: 4x 8s d&b Coaxial Speakers

Ground Subs: D&B V- Series Subs (Additional charge may apply)

The ArrayCalc file is available on request.

ArrayCalc V9.2 R002 Project: ASB Theatre Date: 19.09.16 Author: Mike B



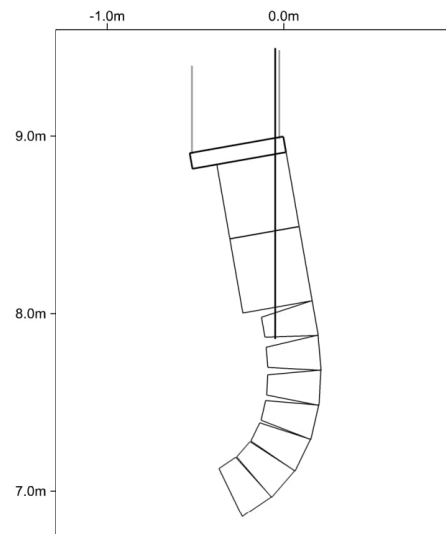
Selected source: Main System T-Series flown

Array settings			
Position x:	0.5 m	Position y:	8.0 m
Frame height front:	9.0 m	No. of T-SUB:	2
Horizontal aiming:	16.0 °	No. of T10:	7
Frame angle:	10.0 °	No. of T10:	0
Delay (abs.):	0.3 ms		

Load OK	within BGV-C1 limits	50% of load limit
Total weight:		123 kg
Height of lowest edge:		6.85 m

TOPs		SUBs	
CUT: Off	CPL: 0	100Hz: Off	

Array view



| Center of gravity | Pickpoints

Cab.	Type	Setup	Level/dB	HFC	Abs.:	Splay:	Link
1	T-SUB	---	0.0		10.0 °	0.0 °	--
2	T-SUB	---	0.0		10.0 °	0.0 °	⊗
3	T10	Arc	0.0	--	10.0 °	0.0 °	--
4	T10	Arc	0.0	--	5.0 °	5.0 °	⊗
5	T10	Arc	0.0	--	-3.0 °	8.0 °	⊗
6	T10	Arc	0.0	--	-13.0 °	10.0 °	⊗
7	T10	Arc	0.0	--	-26.0 °	13.0 °	--
8	T10	Arc	0.0	--	-41.0 °	15.0 °	⊗
9	T10	Arc	0.0	--	-56.0 °	15.0 °	⊗

Pickpoints

	Rear	Front	Distance	Single
x:	0.00 m	0.48 m	0.48 m	0.46 m
y:	-8.14 m	-8.01 m	0.14 m	-8.01 m
Load:	6 kg	117 kg		123 kg
Pickpt. hole:	37	1		2.75
Position:				4.8 cm

Additional Audio Equipment

We have a range of audio equipment available in house for hire.

If you do not see the piece of equipment you are looking for listed below, please let us know as we can usually arrange a sub hire of the equipment.

Consoles: QTY

Avid Venue SC48 (with Stage48 rack)	1
Yamaha LS9-32	1
Yamaha 01v96v2	1

Mics & Di Boxes:

Shure SM58	6
Shure Beta58a	4
Shure SM57	9
Sennheiser e604	6
Sennheiser e609	2
Shure Beta52a	1
Shure Beta91a	1
Shure Beta98a	5
Sennheiser e902	1
Sennheiser e901	1
Shure SM81	2
Rode M5	4
Audio Technica AT2050	2
Klark Teknik DN100	4
Klark Teknik DN200	4
EWI Passive Stereo DI	2
Various stands & booms stands available	

Radio Mics:

Shure QLXD (Beta58a or Beta87a capsules available)	4
Sennheiser G3 e865 Handheld	6
Sennheiser G3 EW 212 Beltback (lapel or headset capsules available)	12

Foldback Wedges:

D&B M4	6
Beta3 Dual 12"	4
Beta3 Single 12"	4
A range of powered speakers are also available	

Audio-Visual

Cabling & Infrastructure

Cat6 and Cat6a (All lines go to patch room):

All 4 corners of stage
All loading galleries
Dimmer Room
Patch Room
FOH Control
Auditorium hatch (Row E)
Dress Circle
Foyer
Whitehaven Wine Room
Dressing Rooms & Basement
Orchestra Pit

Single Mode Fibre Neutrix opticalCON (double LC connector compatible)

Tie line from US P & US OP to FOH Control
Tie line from US P & US OP to Patch Room
Tie line from Patch Room to Whitehaven Wine Room
Tie line from FOH Control to Circle Rail

XLR (All lines go to patch room):

All 4 corners of stage
All loading galleries
Patch Room
FOH Control
Auditorium hatch (Row E)
Dress Circle
Foyer
Whitehaven Wine Room
Dressing Rooms & Basement
Orchestra Pit
12ch x 4return Whirlwind Multipin (1x PS to Control,1x OP to Control,1x Control to patch)

Power

Separate general power (labelled SG) and audio power (labelled AU)
10 amp power throughout building
50 amp PDL 56 Series throughout most areas of the stage house and auditorium
1 X 50 amp PDL 56 Series General Power in each corner of the stage
1 X 50 amp PDL 56 Series Audio Power in USOP & USPS
2 X 63 amp in truck dock
400 amp Powerlocks general power DSOP
160 amp Powerlocks Audio power USPS

